



Manoharbai Shikshan Prasarak Mandal Armori's

**MAHATMA GANDHI ARTS, SCIENCE &
LATE NASARUDDINBHAI PANJWANI COMMERCE
COLLEGE, ARMORI**

Dist. Gadchiroli (Maharashtra) 441 208

Affiliated to Gondwana University, Gadchiroli.

Re-accredited by NAAC 'A' with 3.24 CGPA

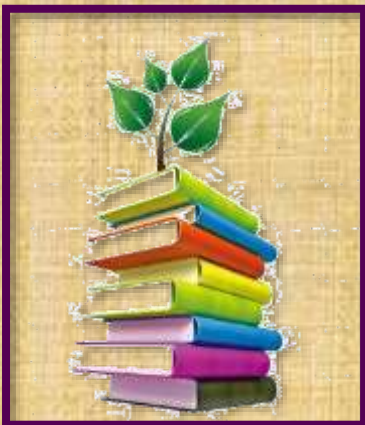
ANNUAL QUALITY ASSURANCE REPORT

AQAR : 2022-2023

CRITERION – I
CURRICULAR ASPECTS

METRIC NO: ~ 1.1.2.

METRIC NAME: ~The institution adheres to the academic calendar including for the conduct of Continuous Internal Evaluation (CIE)



**Web: - mgcollegearmori.ac.in
e-mail: - mgcollege.armori@gmail.com
Phone: - 07137-266558**

Institution's Academic Calendar

Academic Calendar 2022-2023:

[http://mgcollegearmori.ac.in/files/Academic Calendar 2022-23 updated.pdf](http://mgcollegearmori.ac.in/files/Academic_Calendar_2022-23_updated.pdf)